

**ATTENTION**  
OBSERVE PRECAUTIONS  
FOR HANDLING  
ELECTROSTATIC  
DISCHARGE  
SENSITIVE  
DEVICES

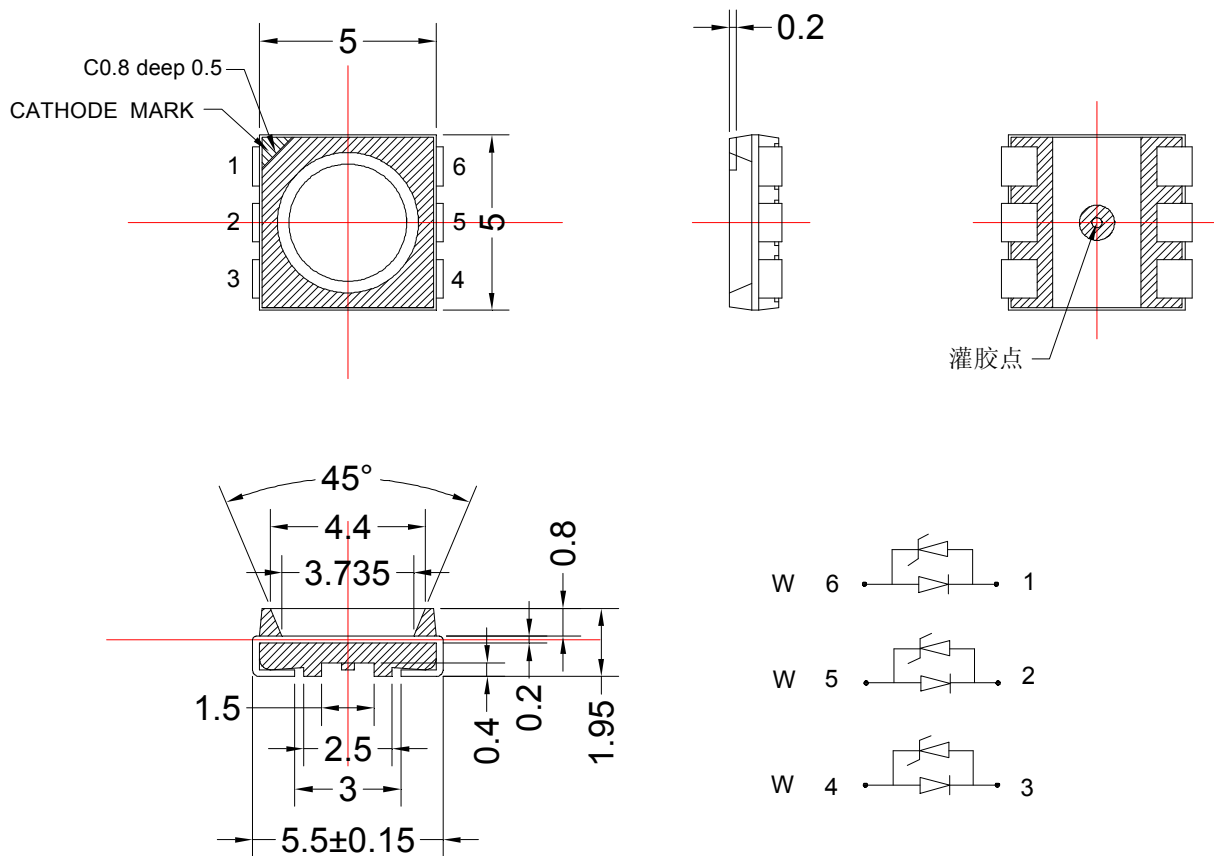
### 1、Features/特征:

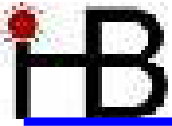
- I Emitting Color/发光颜色: Warm White
- I Lens Type/封装特性: Yellow Diffused/黄色散射
- I Device Outline/外形特征: 5.5×5.0×1.95 (unit:mm)
- I RoHS compliant/符合 RoHS 标准

### 2、Applications/应用:

- I Backlight for Mobile, Machine Vision, LCD Display/手机、电话、显示屏背光源
- I Backlight in Dashboard and switch of Automive/汽车仪表盘、记程器背光源

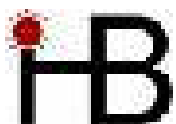
### 3、Outline Dimensions/产品外形尺寸 (units:mm) :





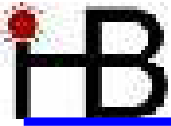
**4、Absolute maximum ratings/极限参数 (Ta = 25°C):**

| Parameter<br>参数                 | Color<br>颜色 | Symbol<br>符号 | Test Condition<br>测试条件 | Values 数值 |      | Unit<br>单位 |
|---------------------------------|-------------|--------------|------------------------|-----------|------|------------|
|                                 |             |              |                        | Min.      | Max. |            |
| Power Dissipation<br>损耗功率       | White       | Pd           | —                      | —         | 95   | mW         |
|                                 | White       |              |                        | —         | 95   |            |
|                                 | White       |              |                        | —         | 95   |            |
| Reverse Voltage<br>反向电压         | White       | VR           | IR = 30 μ A            | 5         | —    | V          |
|                                 | White       |              |                        |           |      |            |
|                                 | White       |              |                        |           |      |            |
| Pulse Current<br>正向峰值电流         | White       | Ifp          | Duty=0.1, 1kHz         | —         | 100  | mA         |
|                                 | White       |              |                        |           |      |            |
|                                 | White       |              |                        |           |      |            |
| Forward Current<br>正向工作电流       | White       | Ifm          | —                      | —         | 25   | mA         |
|                                 | White       |              |                        |           |      |            |
|                                 | White       |              |                        |           |      |            |
| Operating Temperature<br>工作温度范围 | White       | Topr         | —                      | -40       | +85  | °C         |
|                                 | White       |              |                        |           |      |            |
|                                 | White       |              |                        |           |      |            |
| Storage Temperature<br>储存温度范围   | White       | Tstr         | —                      | -40       | +85  | °C         |
|                                 | White       |              |                        |           |      |            |
|                                 | White       |              |                        |           |      |            |



**5、Electrical and optical characteristics/光电参数 (Ta = 25℃):**

| Parameter<br>参数                    | Color<br>颜色 | Symbol<br>符号 | Test Condition<br>测试条件 | Values 数值 |      |     | Unit<br>单位 |
|------------------------------------|-------------|--------------|------------------------|-----------|------|-----|------------|
|                                    |             |              |                        | Min       | Typ  | Max |            |
| Forward Voltage<br>正向电压            | White       | VF           | IF = 20mA              | —         | 3.3  | 3.8 | V          |
|                                    | White       |              |                        | —         | 3.3  | 3.8 |            |
|                                    | White       |              |                        | —         | 3.3  | 3.8 |            |
| Reverse Current<br>反向电流            | White       | IR           | VR = 5V                | —         | —    | 30  | μ A        |
|                                    | White       |              |                        | —         | —    | 30  |            |
|                                    | White       |              |                        | —         | —    | 30  |            |
| Chromaticity<br>coordinates<br>色坐标 | White       | CIE-X        | IF = 60mA              | —         | —    | —   |            |
|                                    |             | CIE-Y        |                        | —         | —    | —   |            |
| Luminous Intensity<br>发光强度         | White       | Iv           | IF = 20mA              | 770       | 1500 | —   | mcd        |
|                                    | White       |              |                        | 770       | 1500 | —   |            |
|                                    | White       |              |                        | 770       | 1500 | —   |            |
| Luminous Intensity<br>发光强度         | White       | Iv           | IF = 60mA              | 2130      | 4000 |     | mcd        |
| Viewing Angle<br>发光指向角             | White       | 2 θ 1/2      | IF = 20mA              | —         | 120  | —   | Deg.       |
|                                    | White       |              |                        | —         |      | —   |            |
|                                    | White       |              |                        | —         |      | —   |            |



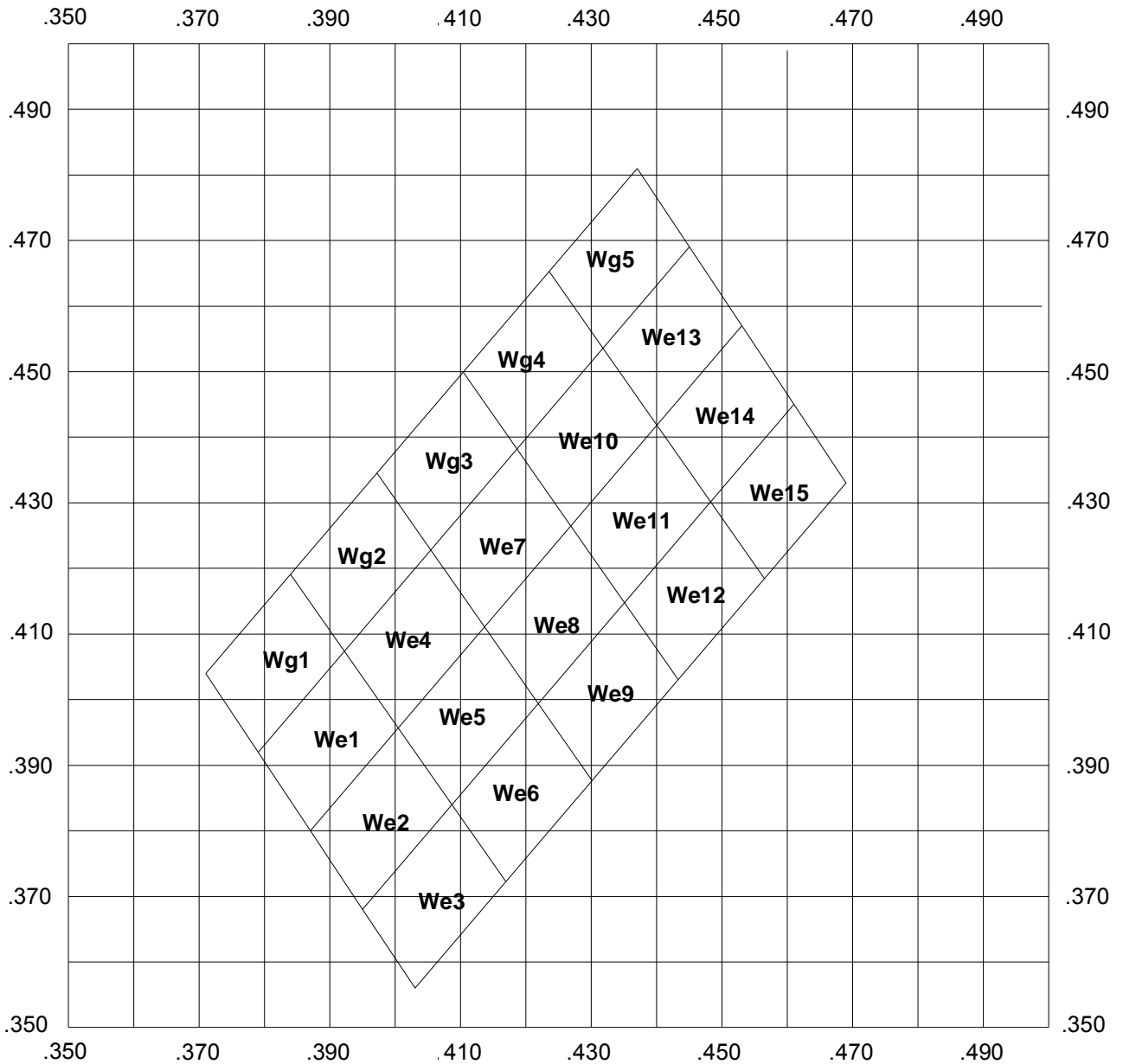
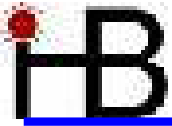
**6、Chromaticity coordinates Ranks /色坐标分档:**

(Ta=25°C)

色坐标误差: ±0.01。

| 代码   | 轴 | 参数    |       |       |       | 代码   | 轴 | 参数    |       |       |       |
|------|---|-------|-------|-------|-------|------|---|-------|-------|-------|-------|
| We1  | X | 0.387 | 0.379 | 0.392 | 0.400 | We2  | X | 0.400 | 0.409 | 0.395 | 0.387 |
|      | Y | 0.380 | 0.392 | 0.407 | 0.396 |      | Y | 0.396 | 0.384 | 0.368 | 0.380 |
| We3  | X | 0.403 | 0.395 | 0.409 | 0.417 | We4  | X | 0.400 | 0.392 | 0.405 | 0.414 |
|      | Y | 0.356 | 0.368 | 0.384 | 0.372 |      | Y | 0.396 | 0.407 | 0.423 | 0.411 |
| We5  | X | 0.414 | 0.422 | 0.409 | 0.400 | We6  | X | 0.417 | 0.409 | 0.422 | 0.430 |
|      | Y | 0.411 | 0.399 | 0.384 | 0.396 |      | Y | 0.372 | 0.384 | 0.399 | 0.388 |
| We7  | X | 0.414 | 0.405 | 0.419 | 0.427 | We8  | X | 0.427 | 0.435 | 0.422 | 0.414 |
|      | Y | 0.411 | 0.423 | 0.438 | 0.426 |      | Y | 0.426 | 0.415 | 0.399 | 0.411 |
| We9  | X | 0.430 | 0.422 | 0.435 | 0.443 | We10 | X | 0.427 | 0.419 | 0.432 | 0.440 |
|      | Y | 0.388 | 0.399 | 0.415 | 0.403 |      | Y | 0.426 | 0.438 | 0.454 | 0.442 |
| We11 | X | 0.440 | 0.448 | 0.435 | 0.427 | We12 | X | 0.443 | 0.435 | 0.448 | 0.457 |
|      | Y | 0.442 | 0.430 | 0.415 | 0.426 |      | Y | 0.403 | 0.415 | 0.430 | 0.418 |
| We13 | X | 0.440 | 0.432 | 0.445 | 0.453 | We14 | X | 0.453 | 0.461 | 0.448 | 0.440 |
|      | Y | 0.442 | 0.454 | 0.469 | 0.457 |      | Y | 0.457 | 0.445 | 0.430 | 0.442 |
| We15 | X | 0.457 | 0.448 | 0.461 | 0.469 | Wg1  | X | 0.379 | 0.371 | 0.384 | 0.392 |
|      | Y | 0.418 | 0.430 | 0.445 | 0.433 |      | Y | 0.392 | 0.404 | 0.419 | 0.407 |
| Wg2  | X | 0.392 | 0.384 | 0.397 | 0.405 | Wg3  | X | 0.405 | 0.397 | 0.410 | 0.419 |
|      | Y | 0.407 | 0.419 | 0.435 | 0.423 |      | Y | 0.423 | 0.435 | 0.450 | 0.438 |
| Wg4  | X | 0.419 | 0.410 | 0.424 | 0.432 | Wg5  | X | 0.432 | 0.424 | 0.437 | 0.445 |
|      | Y | 0.438 | 0.450 | 0.465 | 0.454 |      | Y | 0.454 | 0.465 | 0.481 | 0.469 |

Diagram



**7、Typical electrical/optical characteristic curves/光电特性曲线:**

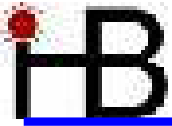


Fig.1 正向电流 Vs. 正向电压

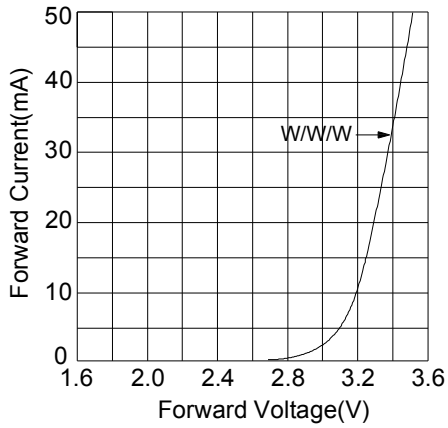


Fig.2 相对亮度 Vs. 正向电流

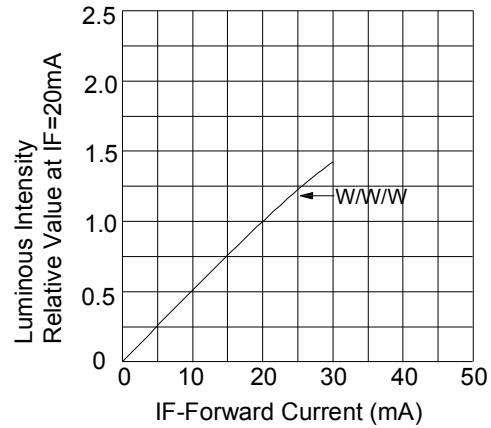


Fig.3 正向电流 Vs. 环境温度

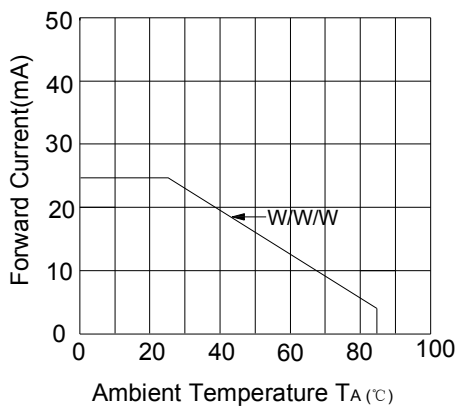


Fig.4 相对亮度 Vs. 环境温度

